



**New Product – Key Facts**

**Product:**

**Handi-Wrench**

- Design allows the torque to be evenly spread around the object being worked resulting in reduced damage and deformation
- Maximum capacity of 4" (100mm)

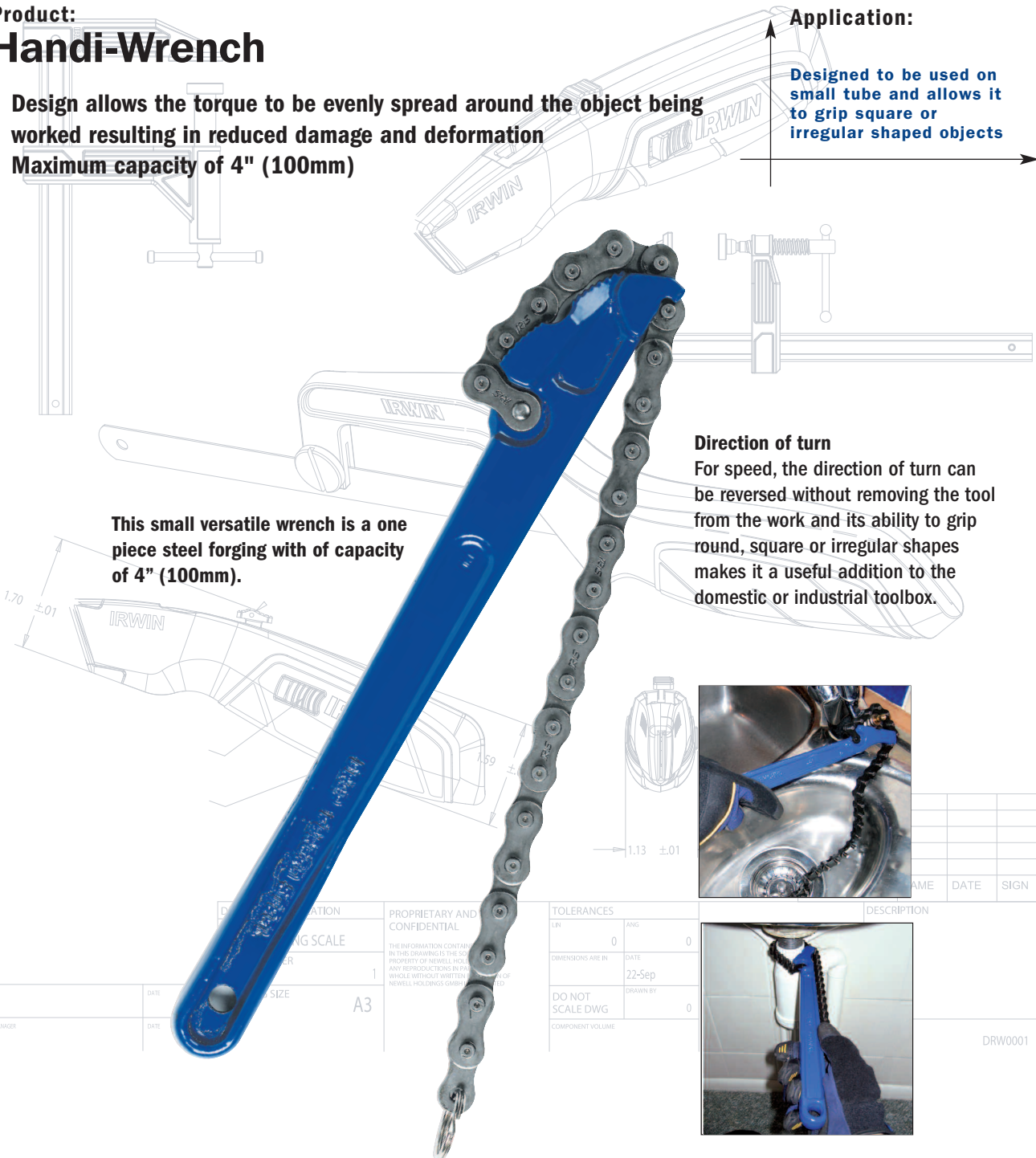
**Application:**

Designed to be used on small tube and allows it to grip square or irregular shaped objects

This small versatile wrench is a one piece steel forging with of capacity of 4" (100mm).

**Direction of turn**

For speed, the direction of turn can be reversed without removing the tool from the work and its ability to grip round, square or irregular shapes makes it a useful addition to the domestic or industrial toolbox.



NAME	DATE	SIGN

DESCRIPTION	

DRW0001

HANDI-WRENCH				
Part #	Description	EAN	Shelf Pack	Master Pack
T240	Handiwrench 4" (100mm)	0734442113522	4	48